

TRIMMING STEPS

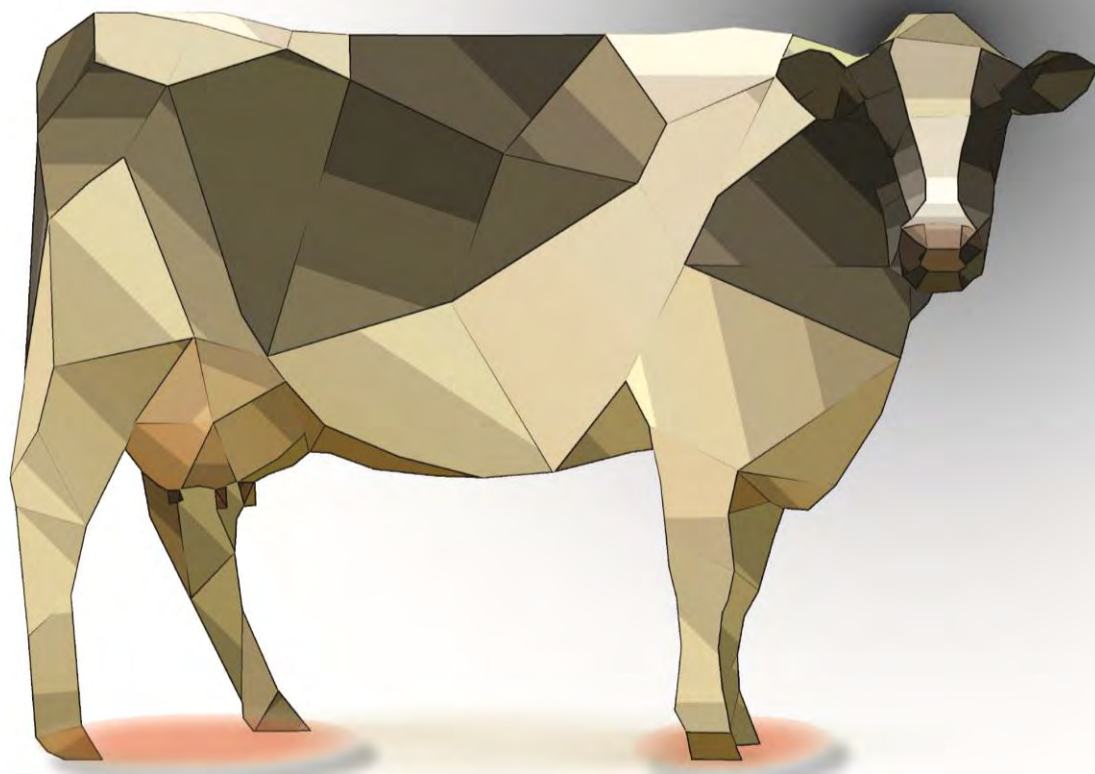
Rodrigo Bicalho, 2017

Parage préventif :

Données scientifiques et pratiques terrain aux USA.

Rodrigo C. Bicalho

Vétérinaire
Professeur
Université Cornell
USA



Hoof trimming in the USA

- Usually performed by a professional hoof trimmer
- Large farms have employees that work on hoof trimming; both therapeutic and preventative
- Veterinarians are rarely involved on hoof trimming activities
- Very few veterinarians have training, experience, and knowledge regarding lameness in general

Examples of hoof trimming equipment



Examples of hoof trimming equipment



Examples of hoof trimming work in small farms



Routine hoof trimming

- Performed at least once per year
 - Cows are usually hoof trimmed at dry off
- Farms that have a problem with hoof overgrowth and lameness may hoof trim cows as often as 3 times a year
- Small and mid size farms will receive a visit from the professional hoof trimmer once or twice a month.
 - Hoof trimmer will perform the schedule routine hoof trimming as well as lame cows

Routine hoof trimming

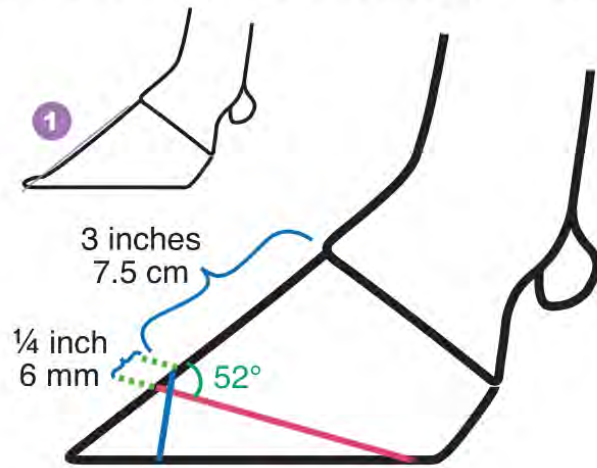
- Professional hoof trimmers will usually perform 60 hoof trimming per day (farm visit)
- Regular hoof trimming is charged around 10 US dollars per cow
- Therapeutic hoof trimming are charged around 15 US dollars per case
- Farmers and employees will attempt to hoof trim lame cows in between visits of the hoof trimmer.

HOOF TRIMMERS ASSOCIATION ^{INC.}®

Fostering advancements in hoof health,
trimming, research, and education

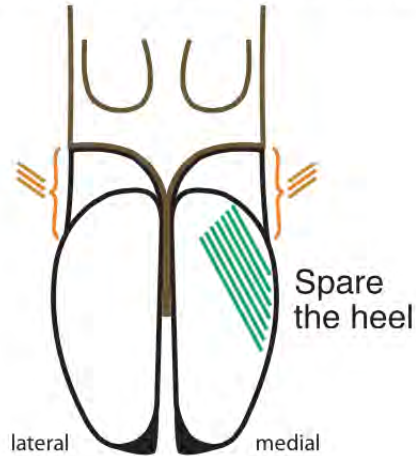
Step 1

Medial Claw Toe Length & Sole



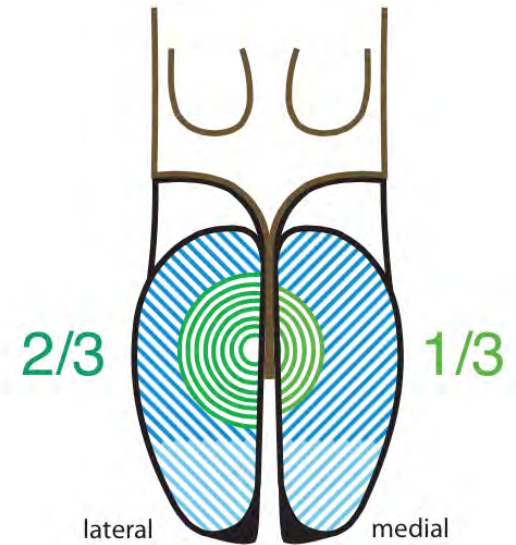
Step 2

Trim Lateral To Match Medial



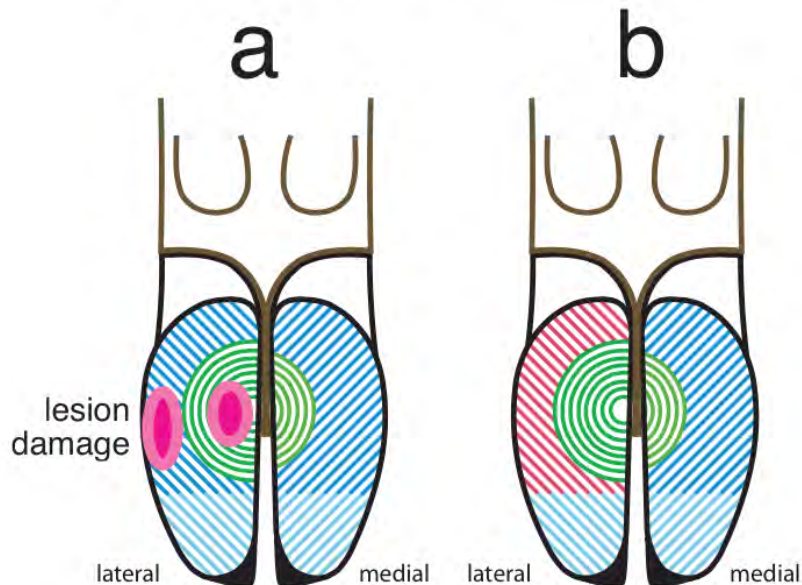
Step 3

Model/Slope



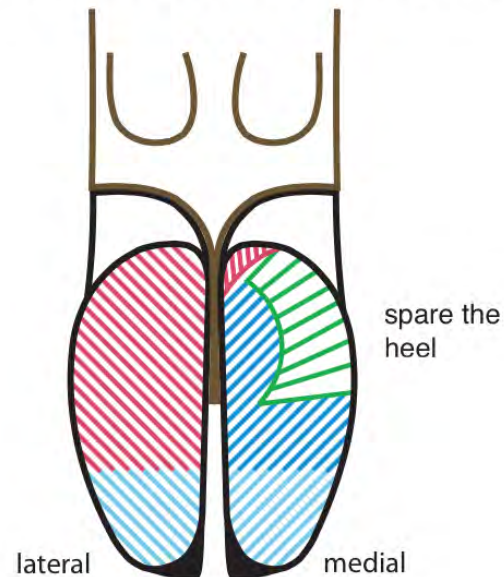
Step 4

Therapeutic Trim Lateral Claw

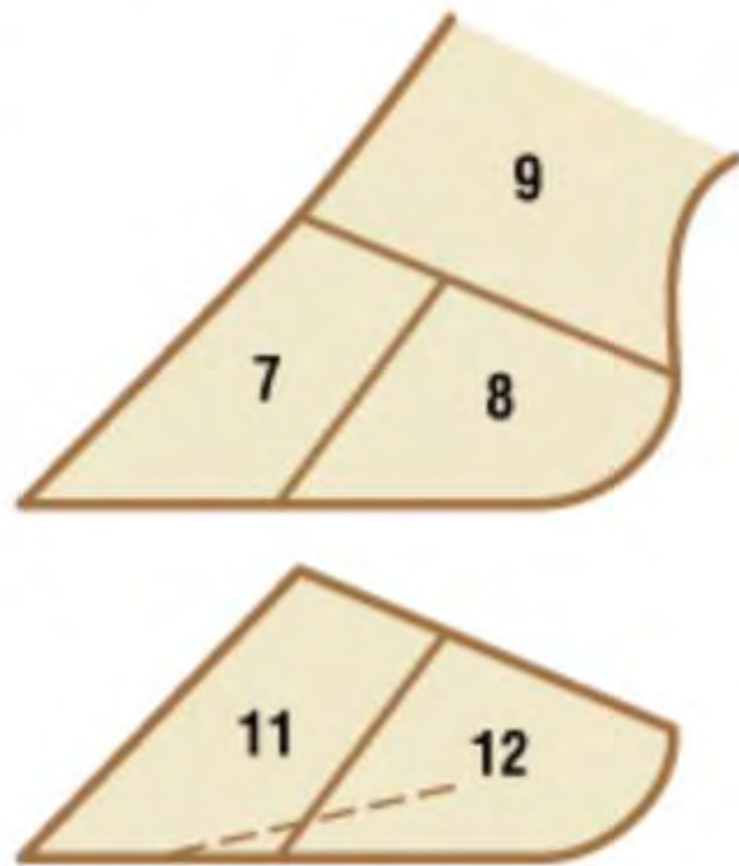
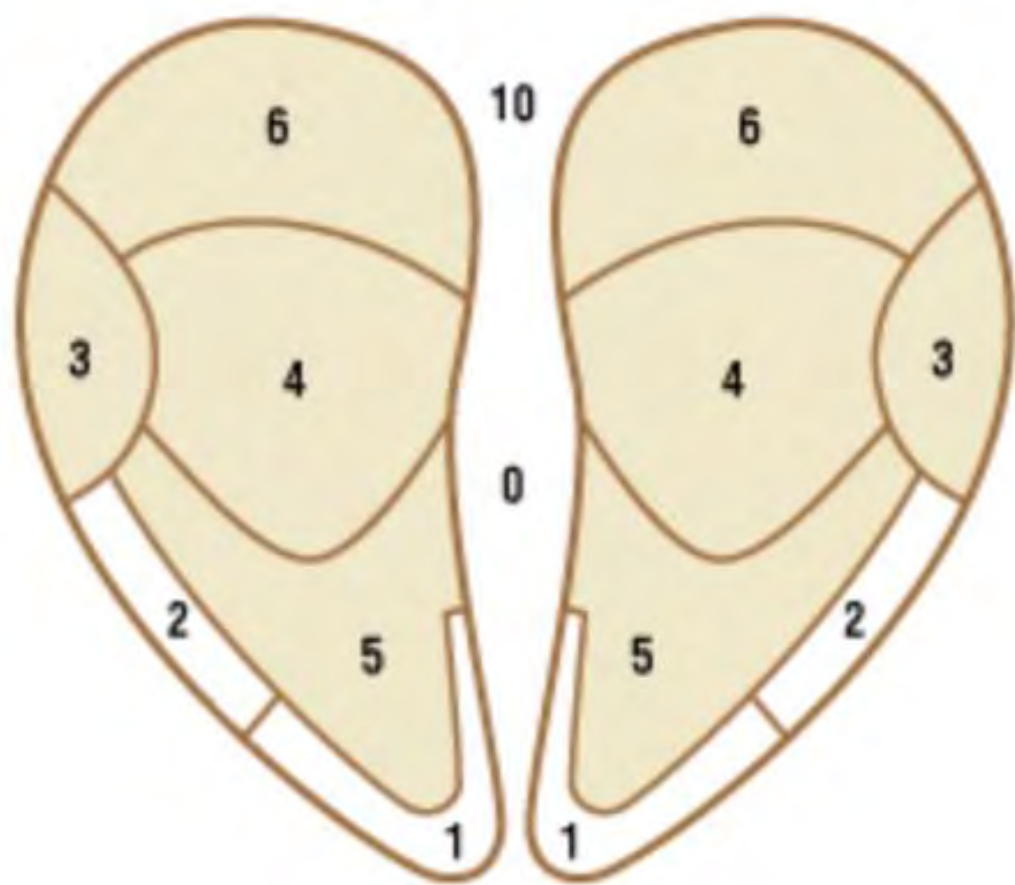


Step 5

Therapeutic Trim Loose Horn



Claw Zones



These claws evenly support

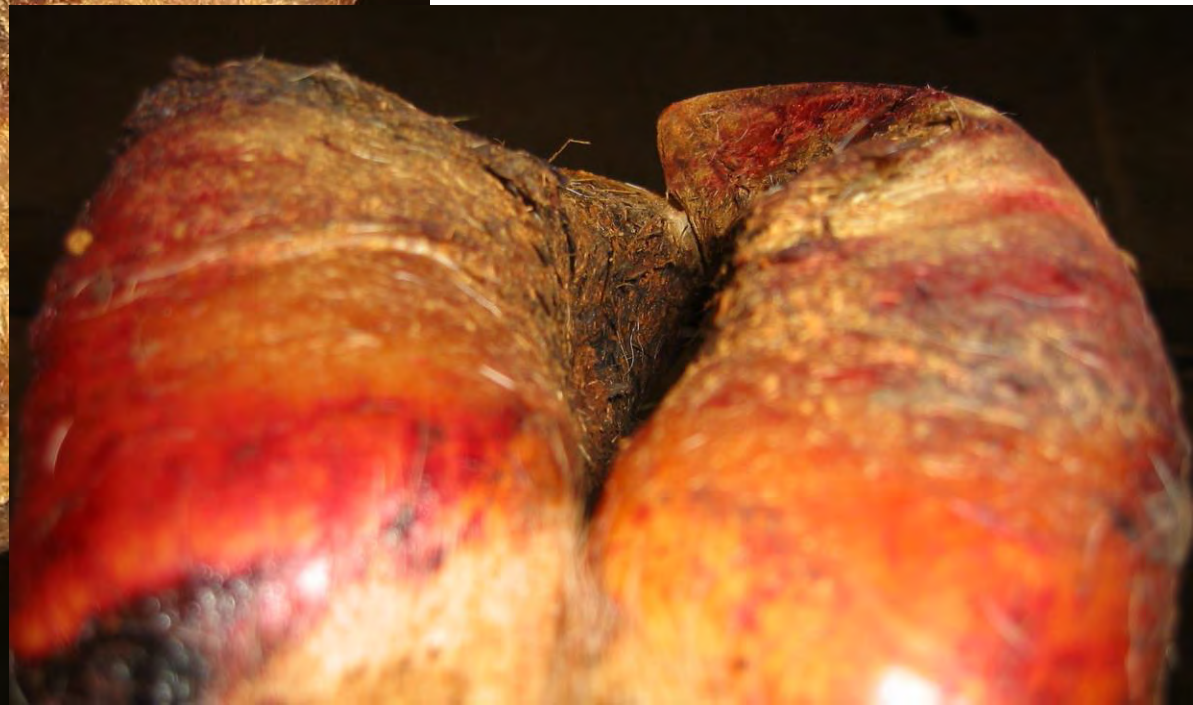


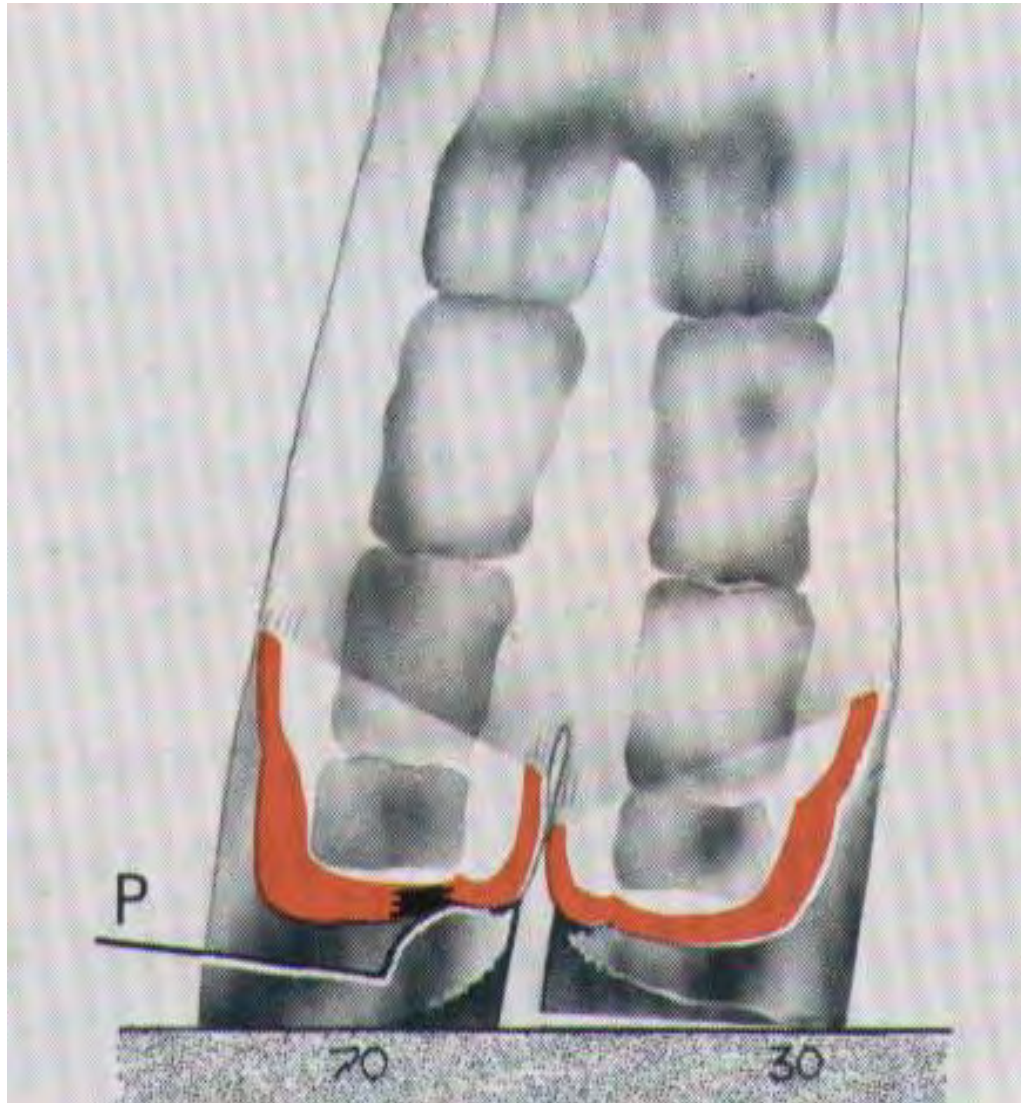
This is the goal for preventing
abnormal mechanics



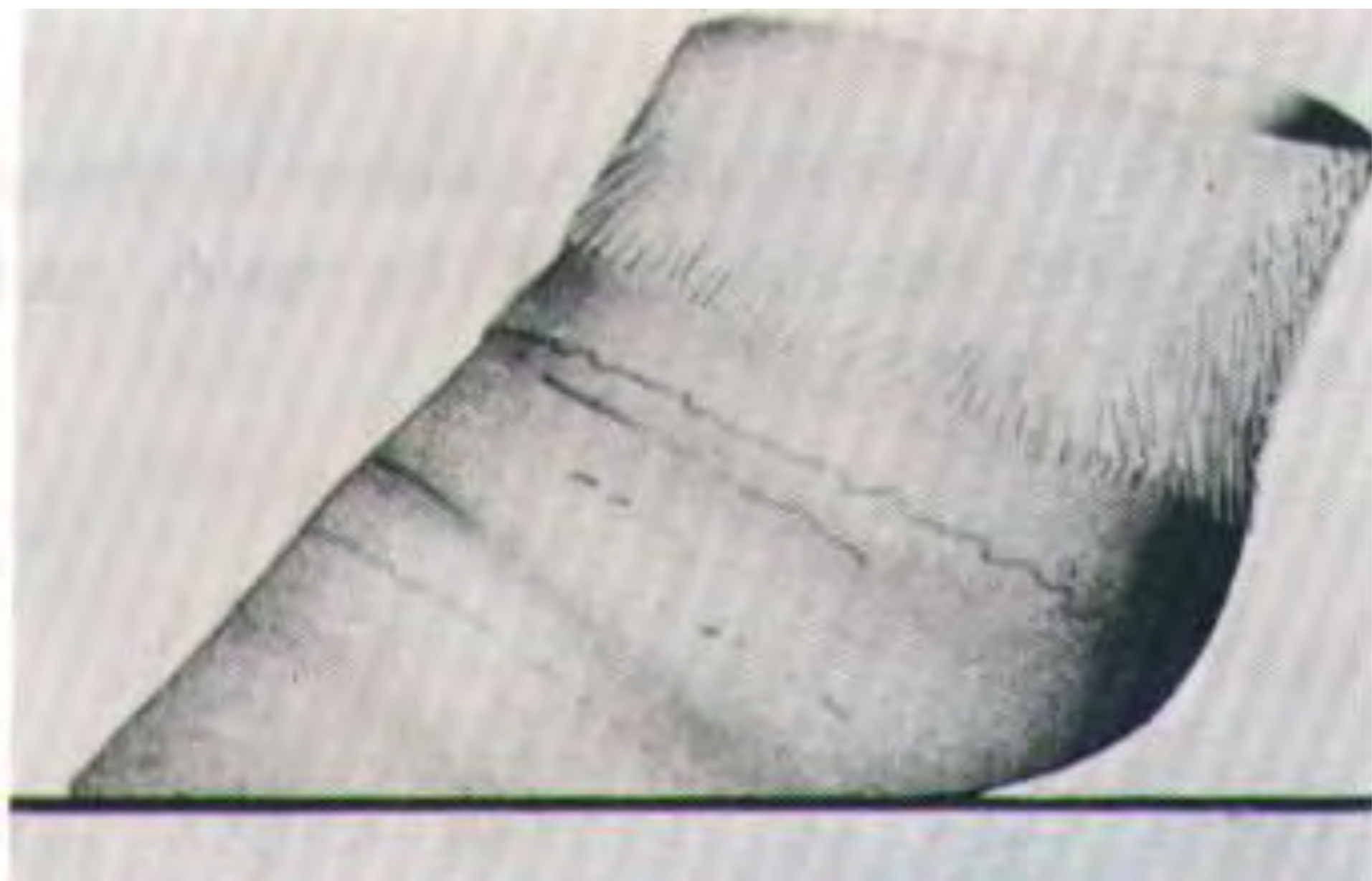


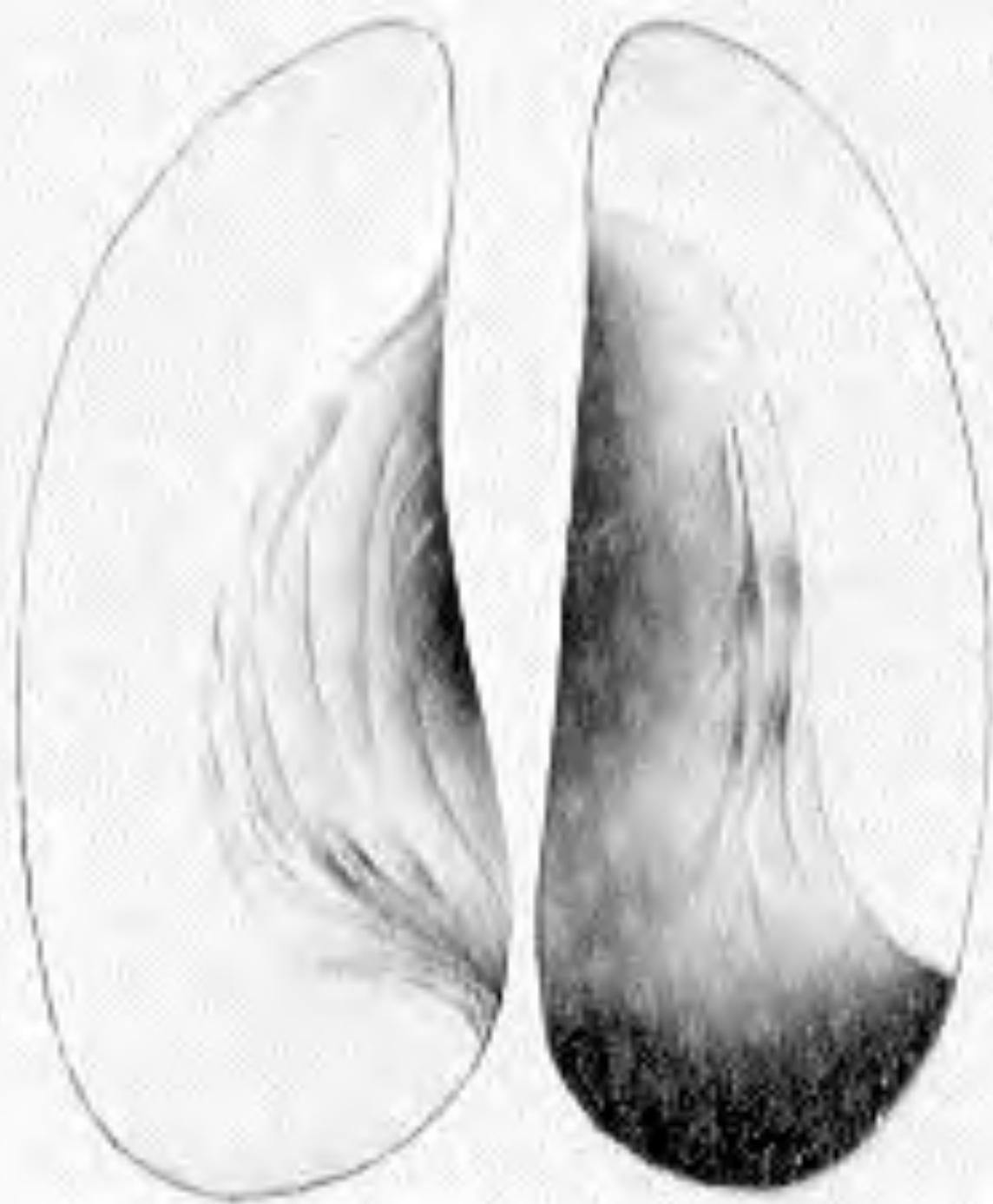






Trimming goal is
to restore
balance
between inner
& outer claws to
help prevent
pressure
induced lesions

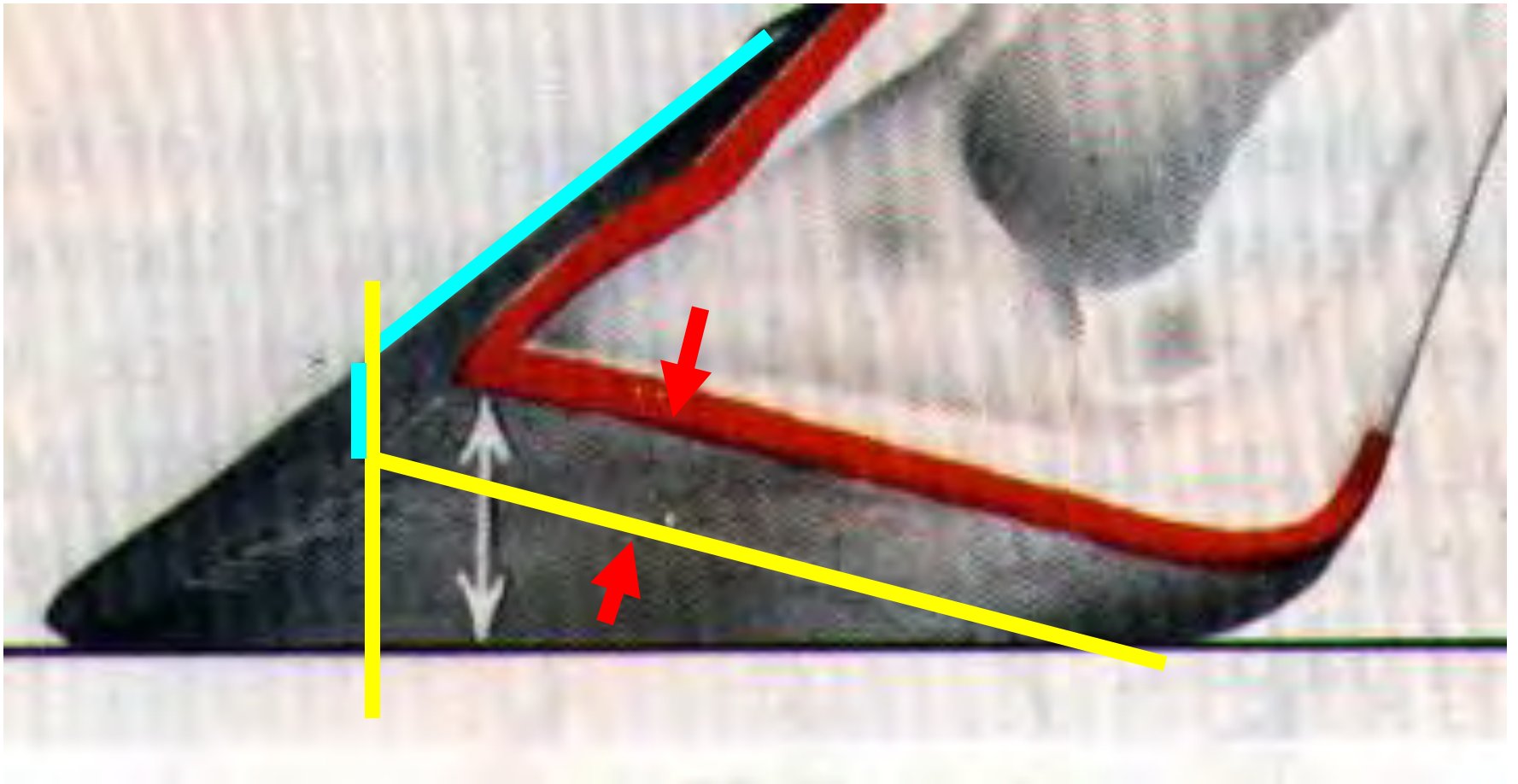








Correct toe length= right sole depth



Toe Length ???

- Must preserve >5 mm sole at toe
- 75 mm or 3 inches – Toussaint-Raven
- Wolfgang Kehler – Hannover, Germany
 - Slaughter cows of known live weight
 - Toes trimmed to 3" then claws split
 - Sole thickness measured
 - 3 1/8" OK for cows up to 1600 lb
 - +1/8" for each 150 lb over 1600

















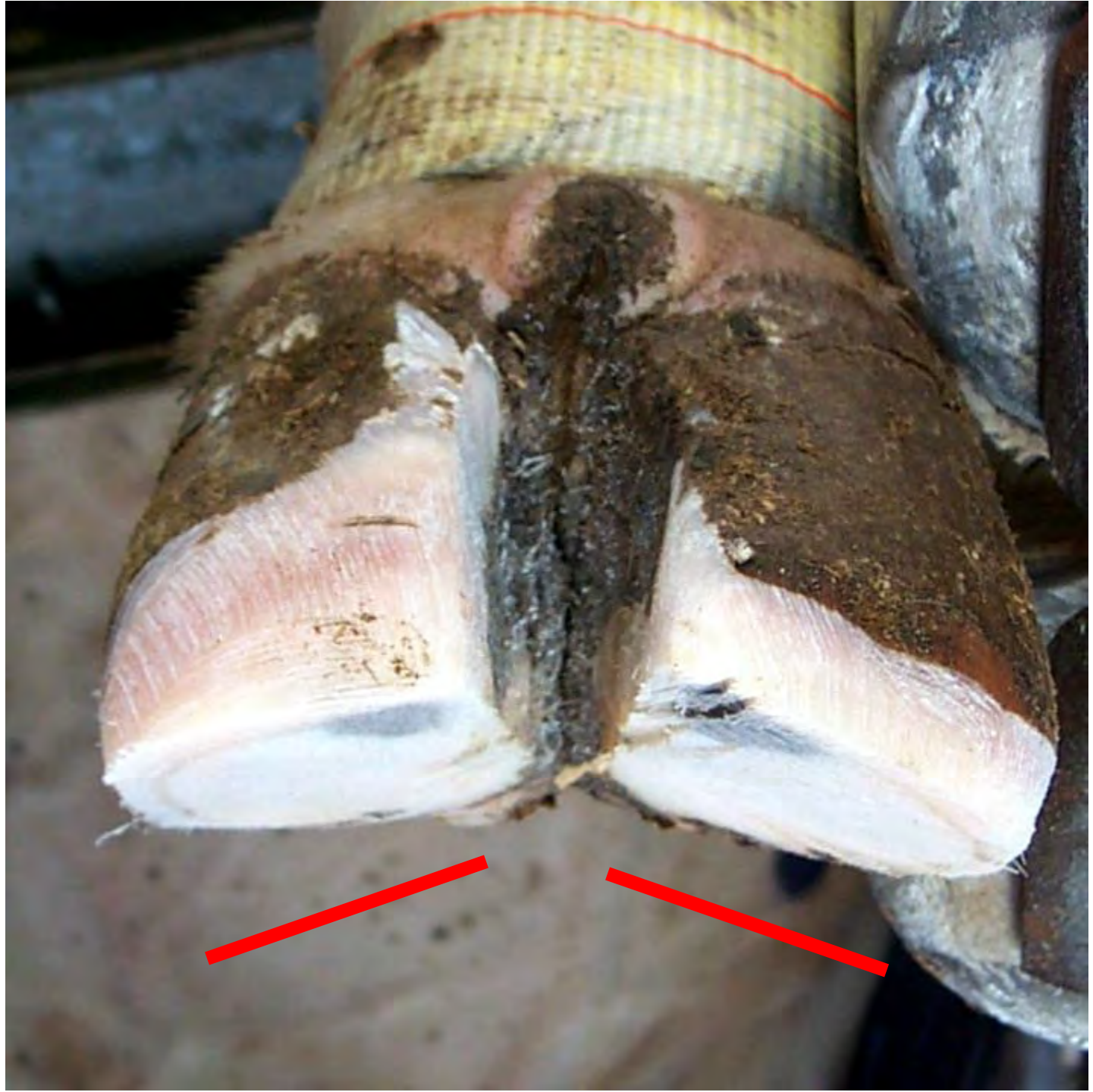


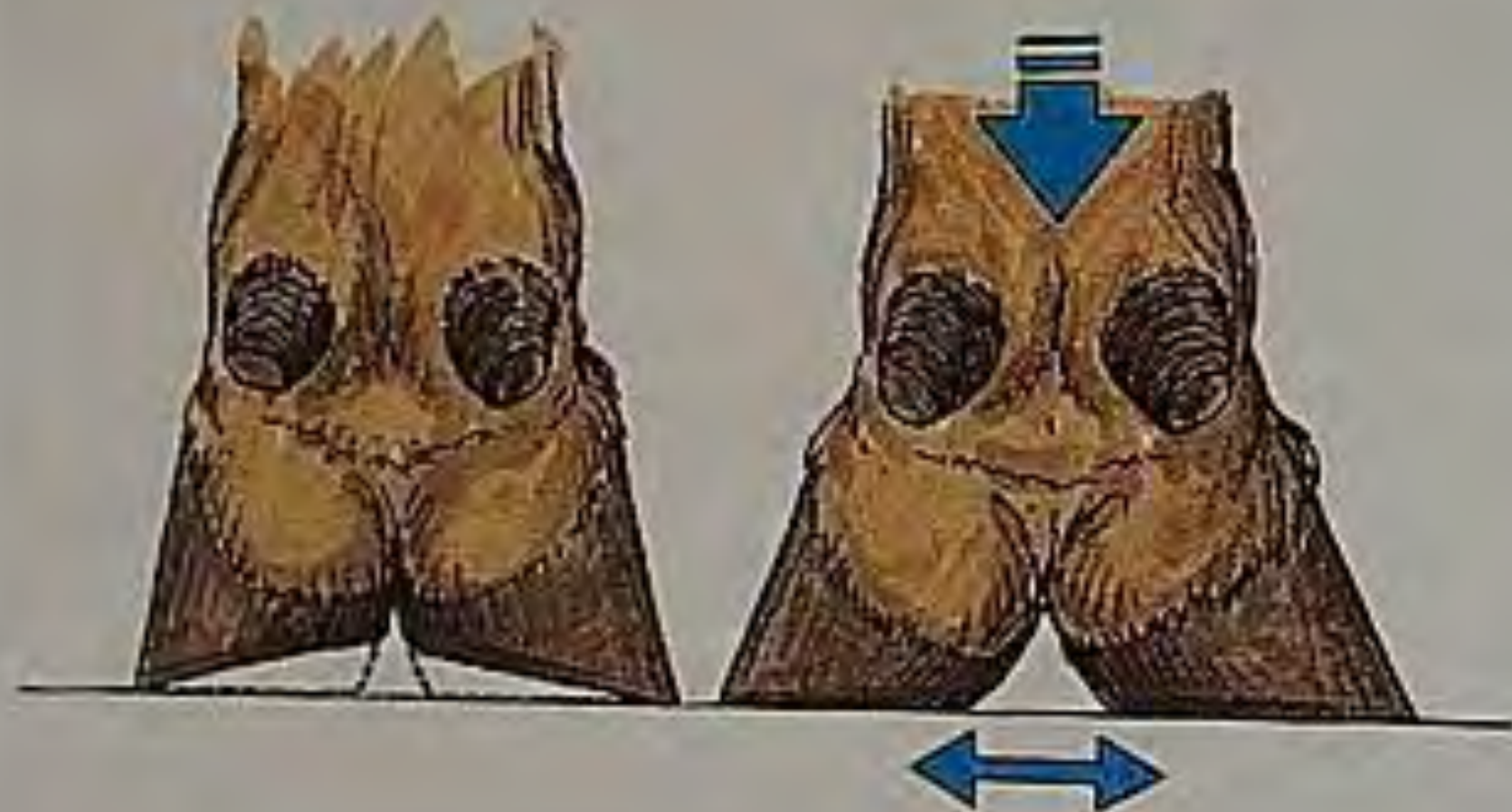


Trimming error

Common Trimming Errors

- Sloping the entire sole
- Excessive removal of wall horn
- Trimming the dorsal aspect of toe tip
- Trimming toe too short and sole too thin
- Removal of heel of medial claw





Finished and OK... but wait, let's round the toe tips

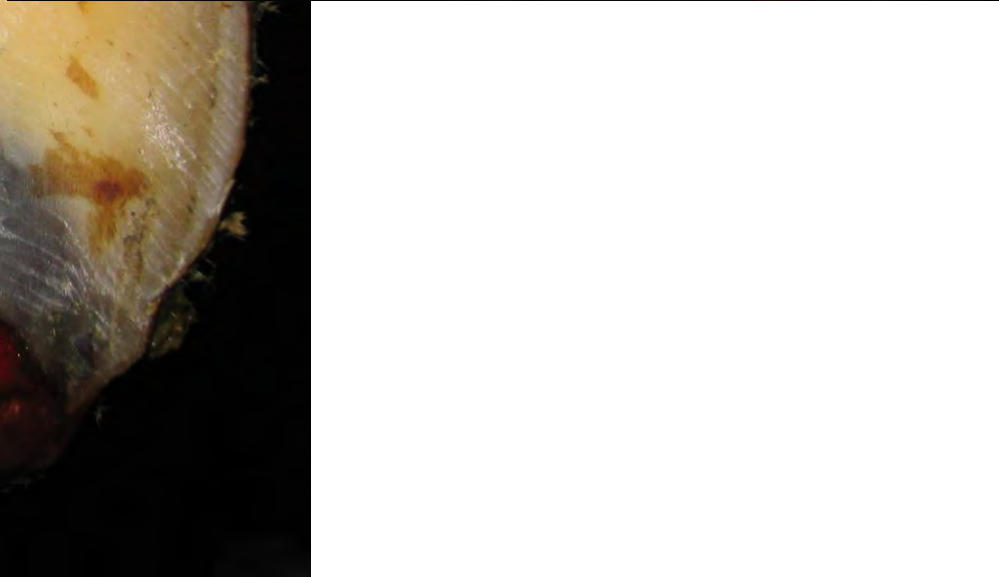




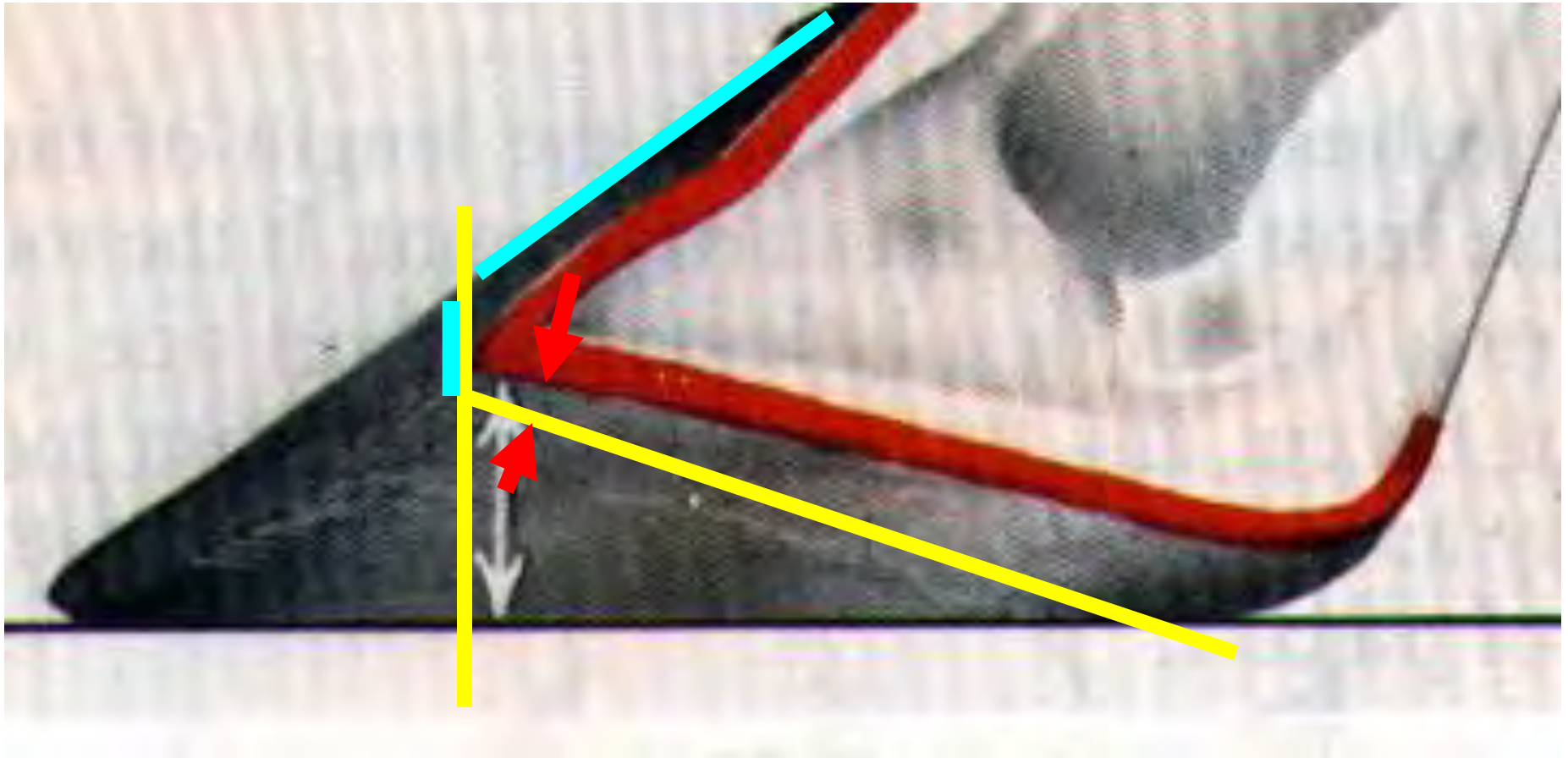
White line location







Toe too short = Sole too thin



Falsch

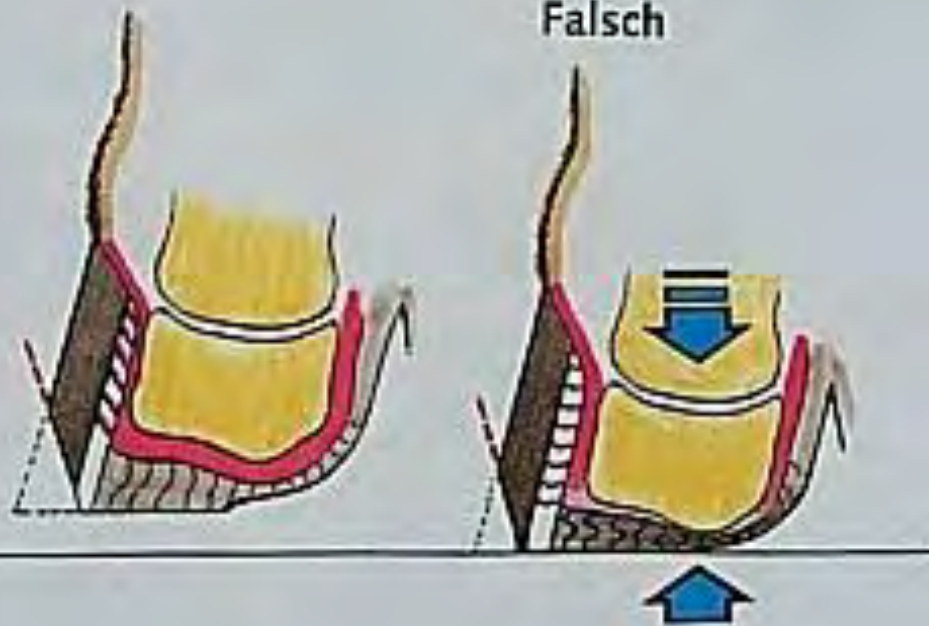
Richtig



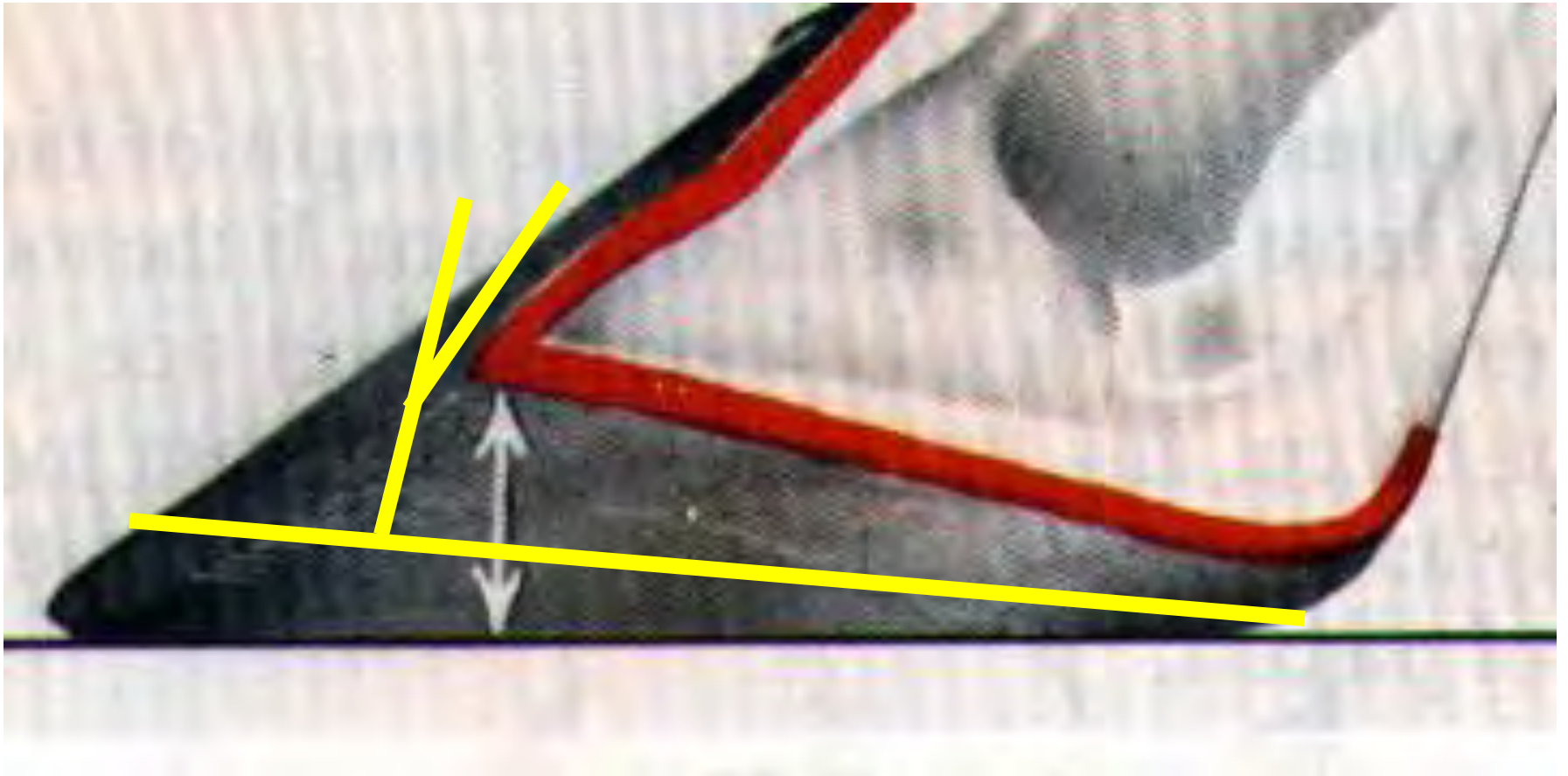
Richtig



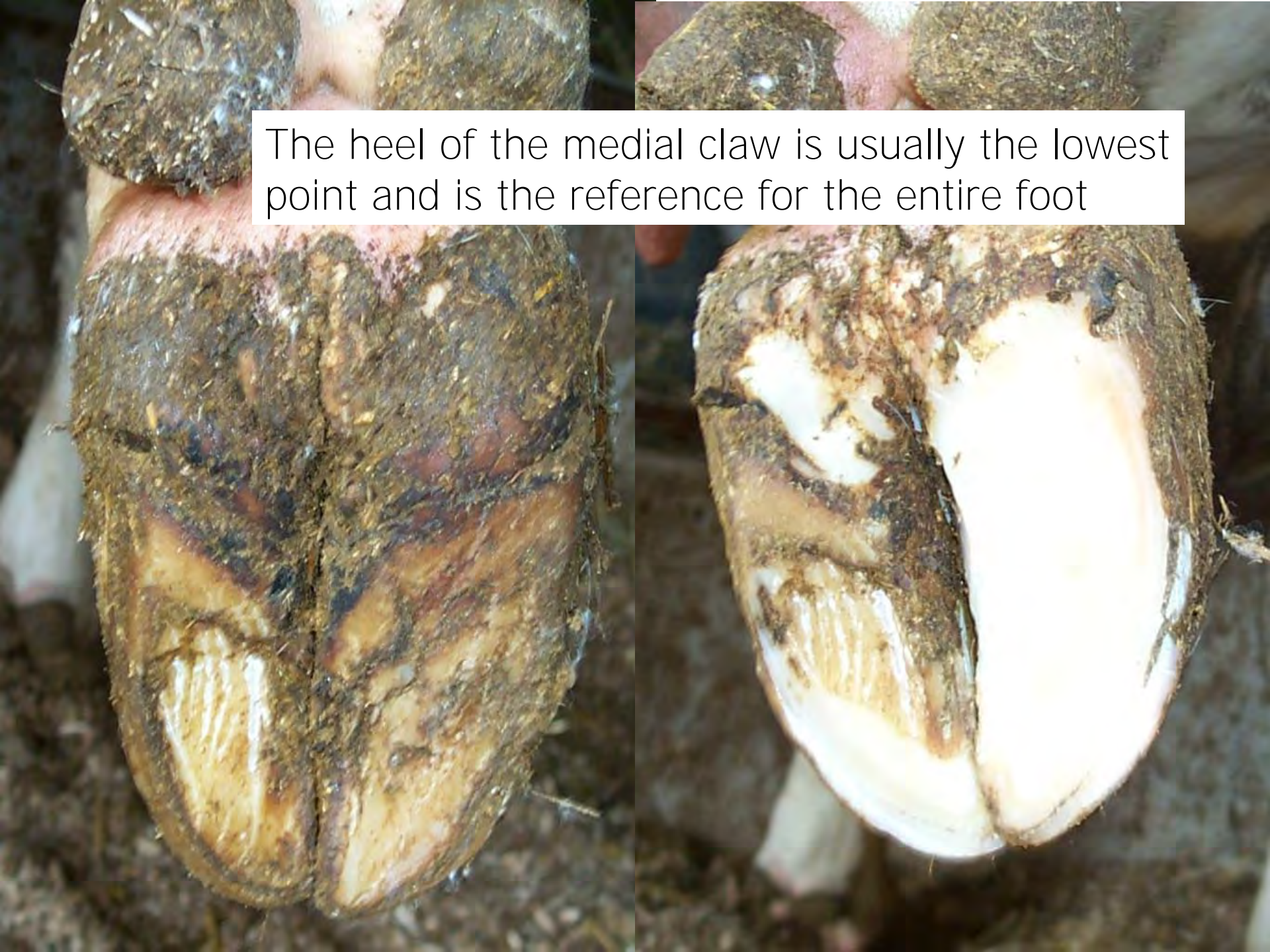
Falsch



Another common error



The heel of the medial claw is usually the lowest point and is the reference for the entire foot



Questions?